

The Saydel Communicator

August and September 2014

School Hours:

- Cornell 8:45 a.m. to 3:30 p.m.
Wed. 9:45 a.m. to 3:30 p.m.
- Woodside 7:45 a.m. to 2:45 p.m.
Wed. 8:45 a.m. to 2:45 p.m.
- High School 7:45 a.m. to 2:46 p.m.
Wed. 8:45 a.m. to 2:46 p.m.

NOTE: Each Wednesday all schools begin one hour later for teacher in-service.

Inside this issue:

Supt.'s Message—Cont'd.	2
Woodside Middle School	2
Cornell Elementary	3
Saydel High School	4
Saydel High School—Cont'd	5
Saydel High School—Cont'd	6
Eagle Nation	7
Eagle Nation—Cont'd	8
Director of Curriculum	9
Director of Student Services	9
Food Service	10
Technology	11
Saydel Athletic Booster—Form	12
Saydel Music Booster-Form	13
School Information	14

SUPERINTENDENT'S MESSAGE

Douglas Wheeler



Saydel Patrons,

It is with great enthusiasm that I write you this welcome to the upcoming school year. In learning my new role as Superintendent of Schools, I have spent many hours learning about the district and meeting students, staff and families. I am excited to be with you on this journey as we continue to enhance learning and opportunities for ALL students.

This past year, staff engaged fully in the TAP System for Student and Teacher Advancement after a year of learning about this powerful program in 2012-2013. The TAP system has four components:

- Multiple career paths for teachers
- Ongoing applied professional growth
- Instructionally focused accountability
- Performance-based compensation

Although TAP was in its first year of full rollout, the April Iowa Assessments provided early evidence of its effectiveness and impact on teaching and learning. Students learning, as evidenced by these annual assessments grew beyond prediction. This is a credit to the hard work of staff and building leadership teams. Carrying this momentum into year three of the five-year TIF grant supporting TAP, teachers will build on their learning and have even larger impacts on student learning.

A strong focus on curriculum alignment and assessment of student learning will further support the work of teachers in the TAP system. Teachers will engage in “mapping” the curriculum. This process involves identifying where Iowa Core standards fit into their courses to ensure students master all standards in each year of school K-12 and that each year of school provides the knowledge and skills needed for the next academic year. This alignment process will further support the work that teachers are doing in the TAP model and should ensure opportunities for students of all learning abilities to grow toward mastery each year.

The work inside buildings this year will be enhanced by the new building and facility upgrades provided through the recent 7.9 Million dollar bond referendum. Patrons have no doubt seen the improvements to the football stadium, maintenance facility and high school unfold throughout the summer. In addition to these visible enhancements, each building is receiving cabling upgrades that will help us provide the infrastructure needed for high-tech learning environments. The most common question I receive is about the completion date of these upgrades. We are working diligently with our contractors to ensure substantial completion by the time school starts. There will be some areas not complete by that time, but those areas should not significantly impact normal school operations and student experiences.

Superintendent's Message—cont'd

There is a great deal going on to meet the three long-term non-negotiable goals of the district:

Improve Student Achievement

Enhance Culture, Image & Relationships

Maximize the Use of Resources

In the few short weeks I have been a part of the Saydel family, the support and knowledge of the board, dedication and knowledge of the staff, and the pride and enthusiasm of the community and students overwhelms me. It is clear that Saydel Community School District is on the way to achieving great things and I am elated to be a part of this progress.

Respectfully,



Douglas Wheeler

Superintendent of Schools

WOODSIDE MIDDLE SCHOOL
Christopher Feldhans, Principal

It seems as though the summers fly by a little faster each year and this year is no exception. We are very excited about the upcoming school year and the possibilities that exist at Woodside.

Registration packets have been mailed out and there are still a few forms that we will need you to complete and return to Woodside Middle School or the Saydel District office. There are instructions included in this packet to help you through that portion of registration. If you require assistance with the process there will be a registration assistance days on Monday, August 4, from 1:00pm – 6:30pm and Tuesday, August 5, from 7:00am – 1:00pm at the Saydel District Office.

Important Dates:**Back to School Night** – August 18

Supply Drop off, Schedule pickup, Meet the Teachers
All grades 6:00pm – 8:00pm

Parent 1:1 Laptop Orientation – August 18 (**7th Grade Parents ONLY**)

This orientation is mandatory for parents to attend. If a parent does not attend the orientation, their student will not be given a laptop.
August 18 – 5:00pm – 6:00pm

First Day of School for Students – August 19***School hours for 2014-15 School Year***

M,T,Th,F – 7:45am-2:45pm

Wednesday – 8:45am-2:45pm

Cornell Elementary

Deb Chiodo, Principal



Welcome to the 2014-2015 school year! We look forward to seeing your child and excited to learn of the many adventures they have had over the summer with books!

WELCOME

New Staff

Meghan Price / Kindergarten	Samantha Meyer / Kindergarten
Katie Delahunt / First Grade	Lorelei Lake/Master Teacher
Beth Greiner/Special Ed	Nicole Schroeder / Third Grade



August 14 Back to School Night 1st – 4th Grades

First Grade:

5:30 Informational Meeting with Teachers – Gym

6:00 take supplies to classroom and meet the teacher

Second Grade:

6:00 Informational Meeting with Teachers – Gym

6:30 take supplies to classroom and meet the teacher

Third Grade:

6:30 Informational Meeting with Teachers – Gym

7:00 take supplies to classroom and meet the teacher

Fourth Grade:

7:00 Informational Meeting with Teachers – Gym

7:30 take supplies to classroom and meet the teacher

August 28th Kindergarten Parent Meeting 6:00 pm

Reminder of Important Dates:

Friday, August 1 – Online registration should be complete for First – Fourth Grades

Monday, August 4 –Registration 1:00 pm – 6:00 pm at District office

Tuesday, August 5 – Registration 7:00 am – 1:00 pm at District Office

Thursday, August 14 – Back to School Night (See schedule above)

Tuesday, August 19 – Friday, August 22

Kindergarten Teachers meet w/Parents and Students by appointment

Tuesday, August 19 – First Day of School 1st – 4th Grades

Monday, August 25 – First Day of School Kindergarten & Preschool

Thursday, August 28 – Kindergarten Parent meeting 6:00 pm

Monday, September 1 – Labor Day / No School

Monday, September 8 – School Board Meeting 6:00 pm / District Office

Tuesday, September 9 – PTO Meeting 6:30 pm @ Cornell

SAYDEL HIGH SCHOOL

Kevin Schulte, Principal

Even though students are absent from classrooms during the summer, our learning and improvement never stop. Members of the leadership team attended the TAP summer institute and worked to continue to seize the positive momentum from the 2013-2014 school year. This group has also met several times to analyze student data, develop our school goals, and plan for improving our instructional practices. During the 2013-2014 school year, we were the only high school in the nation recognized as a TAP School of Promise. This recognition has helped inspire our work this summer.

Many teachers have enhanced their knowledge and instruction through their work this summer. This includes several teachers working together to plan for the upcoming year. Mrs. Annie Gallaher engaged in multiple weeks of training to effectively implement our Introduction to Engineering Design class. This is the first class at the high school in our path of engineering classes.

While classes have not been in session, there has not been a day when we have not had students up at school engaging in personal improvement. Baseball and softball teams experienced successful seasons. Other extra-curricular activities have also been engaging students throughout the summer. We had many students engaged in both online enrichment classes and remedial classes.

We have had the opportunity to hire outstanding additions to our teaching staff:

Mrs. Amy Austin – Social Studies
 Mrs. Lindsay Delagardelle – Art
 Mrs. Nicole Gathercole – English as a Second Language
 Mr. Ryan Halterman – Special Education
 Mrs. Susan Portz - Math

Construction

As a part of the \$7.9 million referendum passed by the community, construction on the high school began in March. Significant progress is being made and we expect that the majority of the high school renovation will be completed prior to school starting. These improvements will enhance the security of the high school, further improve health learning and experience for students, and provide improved stadium and gym.

High School Entrance

The old weight room is being converted into the main office. This fall, each individual entering Saydel High School will pass by the office. After the school has begun, each student and visitor to the building will be required to pass through the office.



Weight room

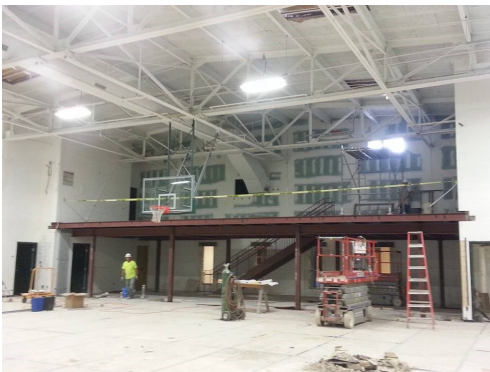
The space dedicated for strength training will be dramatically increased with the renovation of the weight room. These improvements will increase the number of students we can serve in physical education classes and improve the student-athlete experience, as well.

Saydel High School—cont'd



North Gym/Cardiovascular Facility

The north gym is drastically changing. A two level cardiovascular facility is being constructed to provide improved physical education experiences for our students. The lighting will be enhanced with new skylights which accompany a new roof.



Nurse's Office, Teacher Workspace, and Conference Room

These new spaces will improve spaces for students, staff, and parents. The nurse's office is being relocated to a location near the main office. The teacher workspace will provide professional space for staff to accomplish essential work for quality teaching. The new conference room will provide a great space for students, parents and staff to collaborate.

Stadium

Our updated stadium will showcase our artificial turf field. This will provide outstanding facilities for our marching band, athletic teams throughout the year and physical education classes. In addition to the field the home bleachers are moving to the west side of the stadium with a new press box.

Saydel High School—cont'd

In order to help students and parents ease into the high school, we will be hosting a new student orientation on **August 14th from 6:00 p.m. – 8:00 p.m.** The goals of this orientation are to allow students and parents to find classrooms, meet teachers, meet student leaders, find lockers, and ask questions. Students and parents will accomplish this by walking through a shortened schedule to get a brief experience of a school day.

If you have a new student, 9th grade or new to the high school, please attend the orientation on August 14th from 6:00 p.m. – 8:00 p.m.

Important Dates

Date	Time	Event	Location
7/28 – 8/1	8:00 AM	Marching Band Camp	
8/4	1:00 PM – 6:30 PM	Walk-up registration	District Office
8/5	7:00 AM – 1:00 PM	Walk-up registration	District Office
8/11		Cross Country, Football and Volleyball practice begin	
8/13		All staff begin	
8/14	6:00 PM	New Student Orientation	Auditorium
8/19	7:45 AM	First day of school Student Pictures	
8/29	7:30 PM	Renovation Dedication/Open House First home football game	Stadium
9/2-9/5		MAP Testing	
9/15-9/19		Homecoming Week	
9/19		Mid-term progress reports	

OPEN ENROLLMENT NOTICE

Parents considering the use of open enrollment option to enroll their children in another public school district in the state of Iowa should be aware of the following deadlines:

March 1, 2015– Last date for regular open enrollment requests for the 2015-2016 school year.

September 1, 2015– Last date for open enrollment requests for entering kindergarten students for the 2015-2016 school year.

Applications must be filed with the district of residence *and* the receiving district. Parents and students should be aware that open enrollment may result in the loss of athletic eligibility for participation in varsity sports.

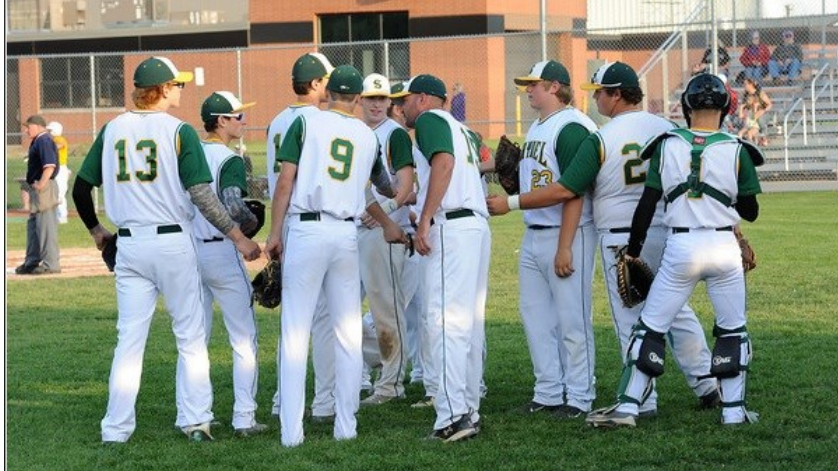
Open enrollment forms are available at the Saydel District Office and are also available through the Department of Education website: www.educateiowa.gov.

For further information, visit the Department of Education website: www.educateiowagov.



Eagle Nation

Adam Busch, Activities Director



Baseball

The 2014 Saydel Baseball came into the HOIAC season with high expectations, and the Eagles certainly delivered. Coming into the final week of the season the Eagles were in 2nd place in the conference standings with only one game to go. Unfortunately the Eagles needed conference foe South Hamilton knock off highly rated North Polk in either game of a double header on the last day of the season to get a share of the conference crown and that didn't happen.

The Eagles finished 2nd in the HOIAC for the 2nd straight season. The Eagle took on Carlisle in the first game of the district playoffs and came away with a great come from behind victory in the 7th inning. At print time the Eagles were set to take on Pella in the second round with the hopes of winning their way to the state tournament.

Softball

The Eagle softball team came into the season with high hopes after a promising finish to the previous campaign. A new coach in Marty Van Houten brought some new ideas and philosophy and the Eagles really built upon it as the season progressed. The Eagles started the year in a tough stretch but really pushed through in the end. The very young Eagles team dominated 4A foe Newton in the first round of regional play before running into perennial powerhouse Indianola. In the end the Eagles finished in the middle of the tough HOIAC and have high hopes for the coming years as Saydel only graduates one player from this year's roster. Off-Season opportunities for development are coming. Keep an eye on the Saydel Activities webpage for more updates.



2014-2015 Activity Passes

\$150 Family Pass – good for entire year – *Note: 1 pass will be issued per family*

\$75 Pass - Good for one adult individual the entire year.

\$25 Student Pass – good for entire year.

\$50 Senior Citizen Single Pass (non-Resident, 65+)

FREE Senior Citizen Pass (Saydel Resident, 65+) – Must provide proof of residency

\$5 Adult / \$3 Student to Varsity events

\$2 Adult / \$0 Student to JV/Freshman events

\$2 Adult / \$0 Student to Middle School events

You must have your pass with you to enter events. A photo ID can substitute if your name matches what is on the family pass list. Your cooperation with our ticket takers is appreciated.

Passes are not valid for tournaments, invitational or postseason Play

Passes are available in the Activities Office or through your Booster Club membership

Why Do We Charge for Middle School Events?

We are often asked this question. The reason we charge for these events is because it helps to offset our expenditures so we can offer middle school programs. Each middle school football game costs a minimum of \$180 in officials' fees, for volleyball and softball - \$110, for basketball and baseball - \$120, wrestling - \$60, and track - \$95. Additionally, we need to provide equipment or pay participation fees for competition. We greatly appreciate your attendance and support of our 7th and 8th graders. These programs are great feeders into our high school activities and provide extra benefits to your child's educational experience.

Fall Sports

The fall sports season is nearly here!!! All of the 9-12 grade fall sports start official practices on August 11th. Many sports will also be running camps prior to the first day of practice. You can find information you need at the new Saydel Activities Webpage. Here you will find links to each sport and activity and will also find the paperwork needed to be eligible to participate.

NEW ONLINE REGISTRATION FOR ACTIVITIES!!!

Beginning this year we now are doing all of our registrations for Saydel activities online. You can find all of this information at the Athletics and Activities tab on the Saydel homepage. If you do not have internet access and need paper copies, these can still be found at the Saydel Activities office. Please call us at 515-262-9325 for more information.

Dr. Simone Alekno, Director of Curriculum, Instruction and Assessment

We will soon welcome back our students to begin what should be an outstanding year for Saydel, and I am excited to join the team at Saydel, as the Director of Curriculum, Instruction, and Assessment [CIA]. For the last two years, Saydel's teachers have engaged in the challenging work required to implement the Teacher Advancement Program [TAP]. I look forward to supporting and enhancing this demanding work.

After beginning my career in education in the Chicago Public Schools in 2001, as a social studies teacher, it was wonderful to return home to the Des Moines Public Schools four years ago. For the last four years, I have supported and facilitated several reform initiatives in Curriculum, Instruction, and Assessment at both the school and district level in Des Moines. In 2012, I completed a PhD in Curriculum, Instruction, and Assessment, and I hope to contribute my education and experience to Saydel's continuing efforts to improve teaching and learning. My primary focus is to always put the needs of our students first and to insure that all efforts in Curriculum, Instruction, and Assessment support students' success.

The goals for Curriculum, Instruction, and Assessment [CIA] for 2014-2015 include the following:

- Revise and develop guaranteed and viable curricula, aligned to the state and national standards, for all subject areas and differentiated to all students' needs.
- Increase the capacity of teachers and school leaders to effectively implement teaching and learning.
- Increase the capacity of the system to support students to achieve standards proficiency or higher.
- Guide a district-wide focus on Science, Technology, Engineering, and Math [STEM].
- Guide a district-wide focus on developing students' competency in navigating global issues and communication.
- Insure that technology is integrated and used in authentic ways in the classroom.

I look forward to meeting and working with you all,

Dr. Simone Alekno

Julie McKibben, Director of Special Education and Student Services

The 2014-15 school year is upon us and I am very excited to continue my educational career at Saydel Community School District. Let me introduce myself, I am Julie McKibben, the new Director of Special Education and Student Services. This is my 12th year in education, with a focus on special education. In my 12 years, I have taught special education in three states and at all levels K-12.

Special Education and Student Services allows me the opportunity to build relationships both at the building level and district level, steering my work out of the office and into the classroom. This year my work will include:

- Co-Teaching** – An inclusion model of teaching that will empower teachers to work collaboratively and begin closing the achievement gap for our students with diverse needs.
- District Developed Service Delivery Model** – Special education requires a service delivery model that supports entitled learners at their specific levels while aligning to state and federal standards.
- District Supports** – To create supports within both Student Services and Special Education for our administrative team and faculty.

I am very excited to begin this journey and look forward to the exciting changes that are happening at Saydel. I look forward to supporting a community that is committed to *servicing the unique learning needs of each and every student*.

Amy A’Hearn, Director of Food Service

Breakfast is offered daily at Saydel

Breakfast is one of the most important meals of the day! Breakfast is the meal that “breaks” the fast, wakes the body and gets it running! So why choose breakfast, specifically school breakfast? Research shows us that school breakfast is beneficial for students in various areas such as:

- Higher academic scores
- Improved behavior
- Reduced tardiness and absences
- Convenience and value for parents

Breakfast is served daily at Cornell Elementary, Woodside Middle School and the Saydel High School. At Cornell we are starting Breakfast-in-the-Classroom where students who choose to eat breakfast will go immediately into the cafeteria once entering the school, gather their breakfast items and go to their classroom to eat rather than in the cafeteria. This will allow teachers more time to interact with students and eliminate time barriers for students to eat breakfast. At Woodside, a wide variety of breakfast options are available for students to choose from before their school day starts. A traditional breakfast in the cafeteria as well as a grab-n-go breakfast between classes is available at the Saydel High School with a wide variety of choices to choose from.

Breakfast costs do fall under the free, reduced and paid criteria. If a child receives free lunch, they can have free breakfast, same with reduced lunches receive reduced breakfast.

We, Saydel Food Service, continue to take steps to better serve your children and help them reap the benefits of breakfast.

School Meal Prices for the 14-15 Year

In adhering to section 205 of the Healthy, Hunger-Free Kids Act of 2010 (Public Law 111-296), the Saydel School Board voted at their June meeting to raise meal prices by ten cents for the 14-15 year. The intent of the law is to gradually increase meal prices paid by the paying child to equal the amount reimbursed for students eligible for free meals. The law allows for there to be a gradual “catch up” of ten cents per year. Even with the increase, Saydel will continue to have one of the lowest meal prices in the metro area.

2014-2015 Breakfast & Lunch Prices

Cornell Prices		Woodside MS & Saydel HS Prices	
Breakfast Regular Price	\$1.45	Breakfast Regular Price	\$1.60
Breakfast Reduced Price	\$.30	Breakfast Sandwich	\$1.80
Lunch Regular Price	\$2.25	Breakfast Reduced Price	\$.30
Lunch Reduced price	\$.40	Lunch Regular Price	\$2.40-\$2.75
		Lunch Reduced Price	\$.40

Milk Prices at all schools*

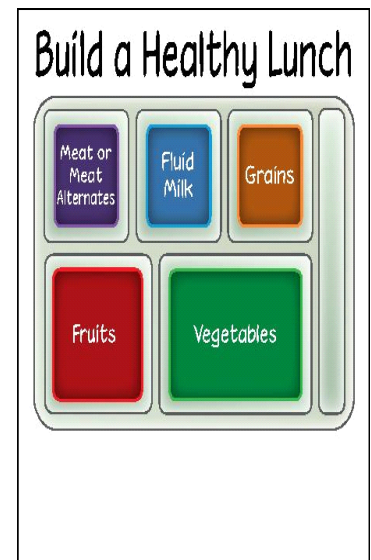
½ pint paper carton \$.40

*milk is included in lunch and breakfast meal prices

Adult Prices

Lunch -\$3.35

Breakfast-\$1.90



Technology Update from Chris Stammerman

Schoology Learning Management System

Beginning this year 5th through 12th grade will begin the partial implementation of a new learning management system called Schoology, <https://www.schoology.com>. Schoology will become an online extension of a student's real classroom. Students and teachers will be able to collaborate, to do homework, to turn in homework, to take quizzes and assessments, to have discussions and more. Schoology will help Saydel leverage the investments in technology that we have made especially in our 1:1 grades.

Schoology will help move our students to more collaborative, anytime learning that better provides our students more 21st century skills.

2014-2015 will see a partial implementation of Schoology with full implementation in 2015-2016.

Technology Infrastructure

Saydel is in the process of updating our network cabling infrastructure. This involves replacing and adding network cabling as part of our bond issue project. Along with this we are updating our wireless infrastructure to improve coverage throughout the district with the goal of covering all education spaces for the 2014-2015 school year.



SAYDEL EAGLES

ATHLETIC BOOSTER CLUB

SAYDEL HIGH SCHOOL 5601 NE 7th DES MOINES, IA 50313

The Athletic Booster Club at Saydel High School is a volunteer parent organization. We help provide equipment, uniforms, and other items for our student athletes when regular budget dollars aren't enough. In the past year a few of our larger purchases have been updating our video equipment used for training purposes, training tables that our used in our athletic training room, and practice equipment for our baseball and softball teams. In order for us to be successful, we depend on the support of our community and local businesses. Thank you for considering one of the following memberships below, which would help strengthen and support our athletic programs. Please refer to www.highschoolsports.net for Saydel sports schedules and information.

We have several options available for individual memberships

1. Platinum Eagle - \$250 includes

- Family Athletic Pass (admission to all regular home scheduled sporting events during the 14-15 season, \$150 value)
- Name listed in our athletic programs

2. Gold Eagle - \$100 includes

- Punch card good for admission to ten home athletic events (\$50 value)
- Name listed in our athletic programs

3. Green Eagle - \$50 includes

- \$15 credit for Saydel Athletic Booster merchandise
- Name listed in our athletic programs

4. Eagle - \$25 includes

- Name listed in our athletic programs

 Yes, we would like to support the Saydel Athletic Booster Program.

Please fill out the information below and send to the address listed above. Your check should be made out to Saydel Athletic Boosters.

_____ \$250 Platinum Eagle

_____ \$50 Green Eagle

_____ \$100 Gold Eagle

_____ \$25 Eagle

Name: _____

Address: _____

Phone Number: _____ Email address: _____



Saydel Music Booster sponsorships are available to businesses, individuals, families and organizations interested in providing financial support for the Saydel Community School's Music Program. Donations provide support to the vocal and instrumental programs at Woodside Middle School and Saydel High School. Some of the expenses covered by the Music Boosters include travel for students, clinicians (drum line & color guard instructor, choir & band master classes), accompanists for concerts & contests, honor festival expenses, awards and music camp scholarships.

Continuing the Tradition of Excellence, our performing groups represent our school and community year-round, serving as outstanding examples of student accomplishments and the exceptional educational programs they represent.

All donations to the Saydel Music Booster program are proudly listed in our concert programs and athletic programs for both Woodside and Saydel throughout the school year. Sponsors may elect to remain anonymous at their discretion.

Donations for sponsorships are TAX DEDUCTABLE!

Checks may be made to – Saydel Music Boosters

----- Detach and return with check or cash to: -----

*Saydel Music Boosters
c/o Saydel High School
5601 NE 7th St.
Des Moines, IA 50313*

Platinum Eagle \$250+ Gold Eagle \$100 Silver Eagle \$50

Green Eagle \$25 Eagle \$10 Other Amount (\$ _____)

Name: _____ Business Individual/Family Alumni
(Name as it should appear in publications.) (Circle appropriate recognition above)
(Alumni will appear after your name if circled. Ex Jane Doe – Alumni)

Please **DO NOT** publicize my membership in programs, on the web site, or other publications

Mailing address: _____ City, Zip: _____

Phone number: _____

Email address: _____

(We do not share your email information with any other entity.)

_____ Volunteers are always welcome for Saydel Music events.
 Please contact me at the above number as a potential volunteer.

SAYDEL COMMUNITY SCHOOL DISTRICT.....SERVING
THE UNIQUE LEARNING NEEDS OF EACH AND EVERY
STUDENT

Saydel Board of Education

Paul Breitbarth, President
Brian Bowman, Vice President
Ray Livingston
Kyle Prendergast
Melissa Sassman
Rob Stephenson
Henry Wood

School Board meetings are held at the Saydel District
Office on the second Monday of each month at 6 p.m.

YOUR ATTENDANCE IS WELCOME!



*Education for Leadership
Learning for Life*

We're on the web
www.saydel.k12.ia.us

SCHOOL LISTINGS:

CORNELL ELEMENTARY

Grades PK - 4
5817 NE 3rd Street
Des Moines, IA 50313
PH: 515-244-8173
Mrs. Deb Chiodo, Principal

WOODSIDE MIDDLE SCHOOL

Grades 5 - 8
5810 NE 14th Street
Des Moines, IA 50313
PH: 515-265-3451
Mr. Christopher Feldhans, Principal

SAYDEL HIGH SCHOOL

Grades 9 - 12
5601 NE 7th Street
Des Moines, IA 50313
Ph: 515-262-9325
Mr. Kevin Schulte, Principal
Mr. Adam Busch, Activities Director

SAYDEL DISTRICT OFFICE

Douglas Wheeler, Superintendent of Schools
Ryan Eidahl, Business Manager
Dr. Simone Alekno, Director of Curriculum
Julie McKibben, Director of Student Services
Amy A'Hearn, Director of Food Services
5740 NE 14th Street
Des Moines, IA 50313
(515) 264-0866 FAX (515) 264-0869

The District Office is adjacent to Woodside Middle School.

SAYDEL COMMUNITY SCHOOL DISTRICT

5740 NE 14th STREET

DES MOINES, IA 50313

NONPROFIT ORGANIZATION

US POSTAGE PAID

DES MOINES, IOWA

PERMIT NO. 57

ECR WSS

POSTAL CUSTOMER