

# Saydel CSD District Organizational Chart



**SAYDEL COMMUNITY**

**SCHOOL BOARD**  
 Brian Bowman, Jennifer Van Houten, Chad Vitiritto,  
 Doug Kayser, Julie Jennings, Roland Kouski Jr., Rob Strickler

**SUPERINTENDENT**  
 Todd A. Martin

**Board Secretary**  
 Beth Vitiritto

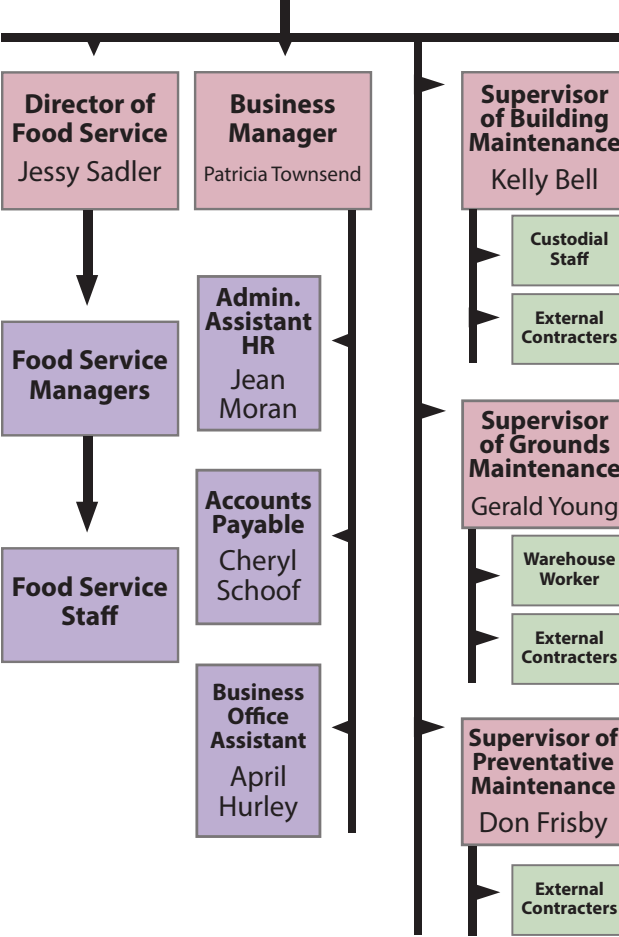
**Board Treasurer**  
 Patricia Townsend

**Administrative Assistant to the Superintendent**  
 Beth Vitiritto

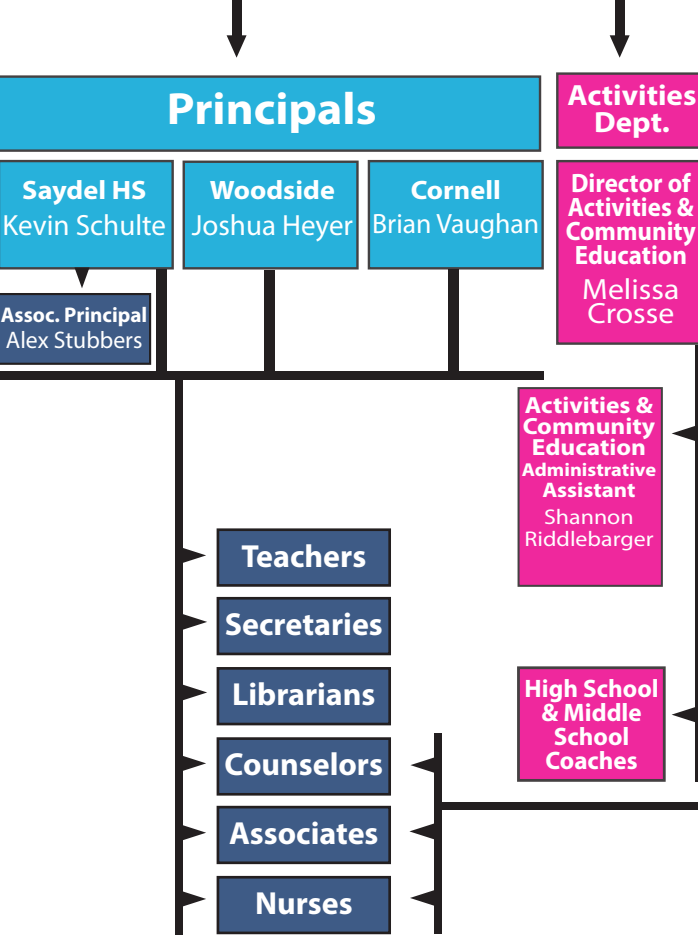
**Durham Bus Service**  
 Karen Smith  
 External

**Heartland AEA 11**  
 Keri Steele  
 External

## Operational Support Network



## Direct Student Support Network



## Instructional Support Network

